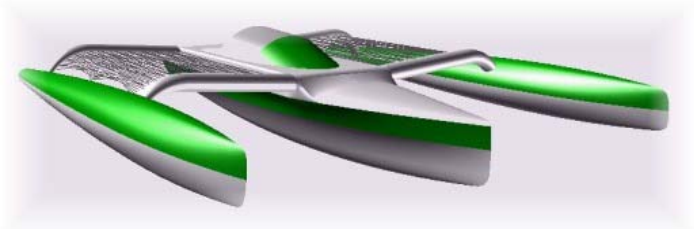


# A33 Trimaran, Design #85

**Designer** Jim Antrim, Antrim Associates  
www.AntrimDesign.com  
510.223.9680

**Builder** Todd Howe, Project Manager  
Advantage Composite Boats  
[howe.todd@gmail.com](mailto:howe.todd@gmail.com) 585-202-0855



## DESCRIPTION

The **A33S**, **A33R\***, and **A33X\*** are being designed for the serious multihull racer as well as the performance oriented cruiser. The hulls can be built with glass skins or ultra light, high-tech carbon. Plans are available for one-off or production. \*The **A33R** has bigger rig and more elaborate sails and the **A33X** (shown at right) is a super rig sport boat.

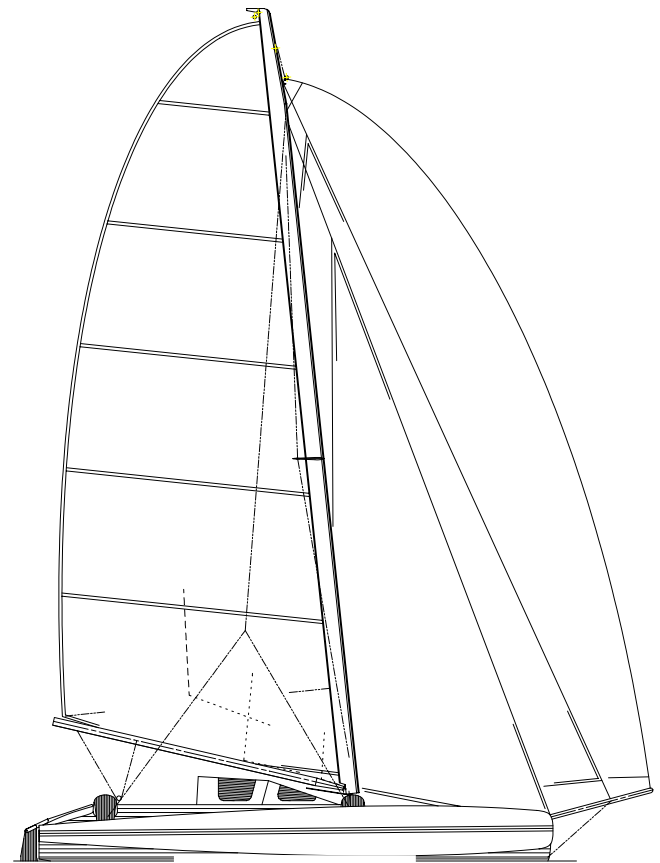
## HULL AND SAIL PLAN

**HULL**- Composite sandwich construction with kevlar and carbon fiber reinforcements in selected areas. The main hull features a rather narrow entry for enhanced medium air performance while the amas provide ample buoyancy, allowing racers to push the edge and fly the main hull.

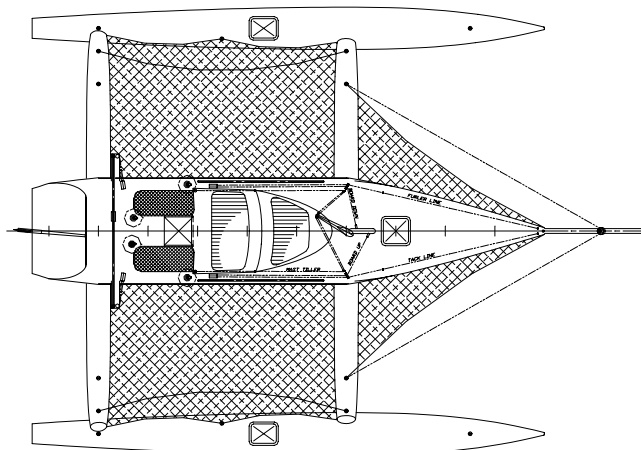
**SAIL PLAN** - Fully battened main with aluminum mast or optional rotating carbon fiber wing mast. The headsail inventory includes a jib on detachable inner forestay, roller furling genoa and an asymmetrical spinnaker.

## DECK LAYOUT

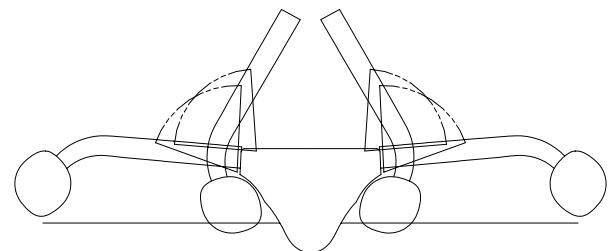
Deck layout is similar to other Antrim designs with all controls lead aft to the cockpit for easy handling. The **A33** can be built in fixed, demountable, or a folding version with 11' folded beam, capable for road transportation as well as fitting into a typical sized berth.



A33X Sail Plan



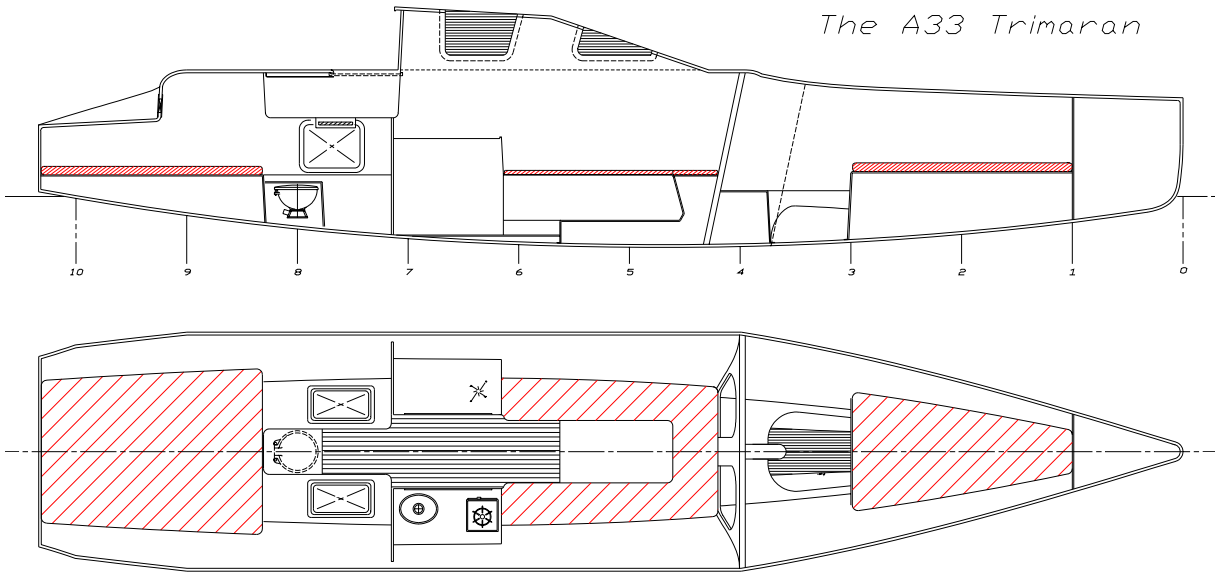
A33 Deck Layout



A33 Folding Geometry

## ACCOMMODATION

The **A33** will offer basic accommodations with a double berth aft and a single berth forward. Port and starboard settee converts to double berth with center insert. For the owners desiring more accommodation, numerous comforts can be added.



*The A33 Trimaran*

**A33 Accommodation**

## SPECIFICATIONS

Displacement	1480 kg	3226 lbs
Overall Length	10.13m	33' 3"
Beam (max.)	8.84m	29' 0"
Draft (board up)	0.45m	1' 6"
Draft (board down)	1.70m	5' 7"

## SAIL AREAS

	<b>A33S</b>		<b>A33R</b>		<b>A33X</b>	
Main	47.0 sq.m.	506 sq.ft.	51.9 sq.m.	559 sq.ft.	55.3 sq.m	595 sq.ft
Jib	20.4 sq.m.	220 sq.ft.	24.7 sq.m.	266 sq.ft.	27.2 sq.m	293 sq.ft
Genoa	38.9 sq.m.	419 sq.ft.	40.5 sq.m.	436 sq.ft.	45.7 sq.m	492 sq.ft
Spinnaker	86.5 sq.m.	931 sq.ft.	100.3sq.m.	1079 sq.ft.	112.6 sq.m	1212 sq.ft

**Antrim Associates, Naval Architects**  
 4018 Archery Way, El Sobrante, CA 94803  
 510.223.9680 fax 510.262.0303  
[www.AntrimDesign.com](http://www.AntrimDesign.com) [contact@AntrimDesign.com](mailto:contact@AntrimDesign.com)